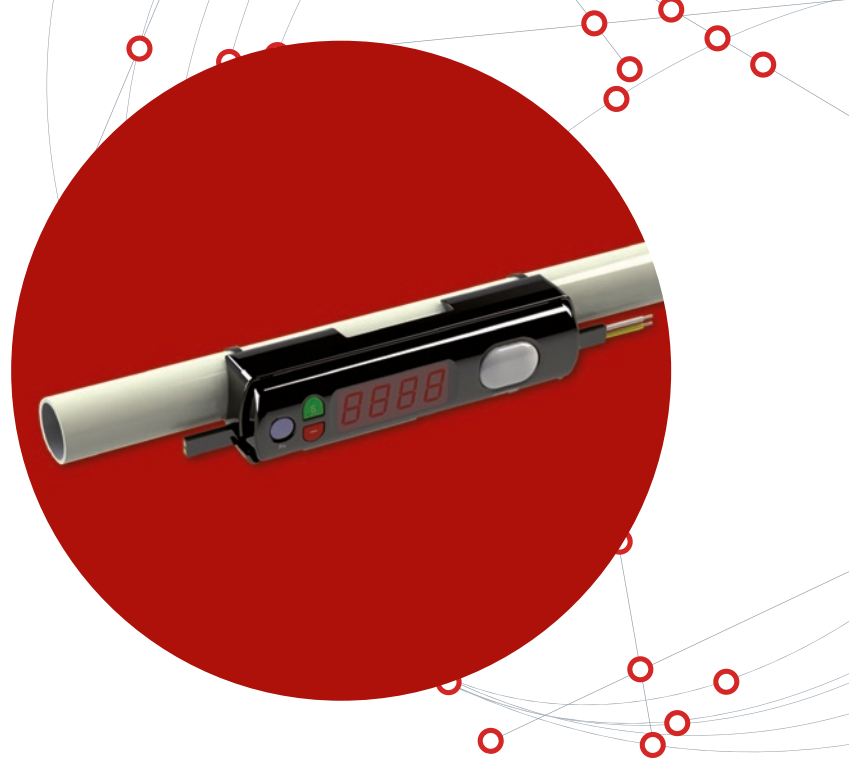




**pick to light**  
systems



# MWU Series

The MWU series is the improved update of the traditional TW series. It has a refined design and it had been equipped with many improvements that makes it more flexible, ergonomic and robust. The light modules are able to fix in 3 different types of bases, making them 100% adaptable to any kind of surface.

The new design makes MWU series ideal for any kind of environments, warehouse and/or productive areas.

## Characteristics

- New tabs used to mount or demount makes it easy to mount light modules, change location/layout. No cover needed.
- 3 types of bases available for attaching to:
  - Aluminum duct base,
  - Plastic base for flat shelves
  - Plastic base for pipe structure.
- Multicolored high intensity LED confirmation button, allowing for the preparation of several simultaneous orders and/or several operators in the same area.
- Good visibility and contrast from any angle.
- Drip-proof design (Surface only).
- Confirm switch operation life: Ten million times.
- Operation temperature: -30°C / +50°C.
- Compatible with AW, SW, JW and TW series.

## Elements

Virtually all the elements in a MWU device are optional, allowing the model best suited to each requirement to be selected.

Main elements:

- Option of 0 to 12 digit alphanumeric display.
- E-paper display available.
- Quantity correction keys.
- Configurable function key.
- Beep.
- Option of limit switch.
- Option of sensor detection.

DPD module, divided into two parts:

The base or duct, which fastens to the shelving, and the front module, which clicks in and secures the AI-Cable.

# Elements

MWU2000L (R/G/F)



3 confirming button options (see below)  
No display  
No Fn, no buzzer  
Size (mm): 76 × 37 × 20.5

MWU2040P (R/G/F)



3 confirming button options (see below)  
4 alphanumeric display  
Fn key, S/- keys, Buzzer  
Size (mm): 155 × 37 × 20.5

MWU2401F



E-paper 5-digit display  
F (Full) type confirm button  
Fn key, Buzzer  
Size (mm): 155 × 37 × 20.5

MWU2000LFS



No display  
F (Full) type confirm button  
Buzzer, limit switch  
Size (mm): 76 × 100 × 20.5

MWU2040PFS



4 alphanumeric display  
F (Full) type confirm button  
Fn key, S/- keys, Buzzer, limit switch  
Size (mm): 155 × 100 × 20.5

MWU2000FE



No display  
F (Full) type confirm button  
Buzzer, sensor (sensing range: 15 cm)  
Size (mm): 76 × 37 × 20.5

MWU2040FE



4 alphanumeric display  
F (Full) type confirm button  
Fn key, Buzzer, sensor (sensing range: 15 cm)  
Size (mm): 155 × 43.2 × 20.5

MWU2401FE



E-paper 5-digit display  
F (Full) type confirm button  
Fn key, Buzzer, sensor (sensing range: 15 cm)  
Size (mm): 155 × 43.2 × 20.5

MWU2401FE-SE



Extension sensor (sensing range: 15 cm)  
To be connected to MWU2040FE and MWU2401FE  
(this module doesn't work alone)  
Size (mm): 76 × 43.2 × 20.5

MWU2040PRG-22



2 + 2 alphanumeric display  
Fn key, S/- keys, Buzzer  
2 confirm buttons (red & green)  
Size (mm): 198 × 37 × 20.5

MWU2414



12 character alphanumeric display  
F (Full) type confirm button, S/- keys  
Size (mm): 225 × 37 × 20.5

## Confirming Button Options:

R (Red)  G (Green)  F (Full color)       